

A man with a beard, smiling, wearing a high-visibility yellow and navy blue work shirt. He is standing in front of a white wind turbine against a blue sky with clouds. The background features dynamic blue and white swooshing lines.

X AIRFLOW™ TECHNOLOGY



Bisley
WORKWEAR



KEEP YOUR COOL ON THE JOB

Lightweight and durability don't normally go hand in hand when it comes to workwear, however Bisley have developed a solution using ripstop fabric. Ripstop is a woven fabric that uses a special reinforcing technique to make it resistant to tearing and ripping.

TECHNOLOGY

Bisley's X Airflow™ Technology is based on a 3D cooling system, where the air flows through multiple ventilation points on the garment at key heat stress areas. With five specially crafted vents across the upper and lower back, shoulders, underarm and front side vents, plus perforated reflective tape for additional breathability, the Bisley X Airflow™ shirts are one of the coolest in the market.



AS/NZS 4602.1:2011

This standard covers the needs of workers in situations where vehicles may be approaching them at speed, in time for any necessary safety action to be taken, or any other industrial situation of similar risk levels where workers need to be seen at distance, against a complex visual background.



AS/NZS 1906.4:2010

Bisley Safetywear garments use high visibility materials made from durable woven or knitted fabrics and are tested for high daytime visibility. Our high quality fabrics and tapes are tried and tested to this standard to ensure you're protected in high risk situations.



AS/NZS 4399:1996

All garments that comply with this standard deliver ultraviolet protection, commonly known as UPF. Where the most effective sun protection is required, we recommend a garment that covers the full arm and leg area and has a sun protection rating of UPF 50+.



AS/NZS 1020:1995

Bisley Workwear offers a large range of natural cotton fibre products, which naturally avoid the generation of static electricity by remaining neutral, therefore increasing the wearer's comfort.



AS/NZS 2392:1999

Bisley Workwear garments meet the requirements of AS/NZS 2392:1999 which outlines the method for permanent labelling with the brand name, size, care instructions, fibre content and country of origin.



AS/NZS 2622:1996

Bisley Workwear garments meet the requirements of AS/NZS 2622:1996 which outlines the method for labelling of fibre content in textile products.

AUSTRALIAN AND INTERNATIONAL STANDARDS



AS 2001.2.17-1987

Bisley Workwear 'water proof' garments are deemed compliant when no water has passed through it over an 18 hour period. These garments have a water-repellent or water-resistant coating that stops moisture from reaching the wearer in wet weather conditions.



ISO 14184-1.1998

Fabrics used in Bisley Workwear garments are tested regularly to ensure that naturally created formaldehyde levels are kept to the safe minimum standard set out by the ACCC (Australian Competition & Consumer Commission). Bisley Workwear garments are free from formaldehyde.



AS/NZS 1957:1998

Bisley Workwear garments meet the requirements of AS/NZS 1957:1998 that outlines the care instructions needed to ensure proper care of the garment.

RIPSTOP SHIRT

FABRIC

- 100% Cotton Ripstop, 150gsm
- 100% Cotton Mesh, 125gsm

PRODUCT FEATURES

- New modern work fit
- Bisley X Airflow™ technology - upper and lower back, underarm and front cooling ventilation
- Twin Bisley signature chest patch pockets with touch tape closure
- Left pocket with pen division and hidden phone pouch
- Contrast yellow bartack and neck trim
- 2 piece contrast coloured structured collar
- Contoured shape 2 piece sleeve
- Buttoned, adjustable sleeve cuff
- Front and back side panel design lines enhances masculinity
- Twin sleeve patch pocket and flap with pen division (Applies to BS6414 only)



BS6414

X Airflow™ Ripstop Shirt

COLOURS: Navy (BPCT)
Charcoal (BCCG)

SIZES: S - 6XL

BS6415

Two Tone Hi Vis X Airflow™ Ripstop Shirt

COLOURS: Yellow/Navy (TT01)
Orange/Navy (TT02)

SIZES: S - 6XL

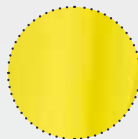
UNDERARM
VENT



FRONT SIDE
VENT



RIPSTOP
FABRIC



VENTED CURVED
BACK YOKE



VERTICAL
BACK VENT



KEY FEATURES

RIPSTOP SHIRT

FABRIC

- 100% Cotton Ripstop, 150gsm
- 100% Cotton Mesh, 125gsm

PRODUCT FEATURES

- New modern work fit
- 3M 8910P perforated reflective tape hoop pattern around body
- Bisley X Airflow™ technology - upper and lower back, underarm and front cooling ventilation
- Twin Bisley signature chest patch pockets with touch tape closure
- Left pocket with pen division and hidden phone pouch
- Contrast yellow bartack and neck trim
- 2 piece contrast coloured structured collar
- Buttoned, adjustable sleeve cuff



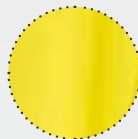
UNDERARM VENT



FRONT SIDE VENT



RIPSTOP FABRIC



VENTED CURVED BACK YOKE



PERFORATED TAPE



VERTICAL BACK VENT



KEY FEATURES

BS6415T

3M Taped Two Tone Hi Vis X Airflow™ Ripstop Shirt

COLOURS: Yellow/Navy (TT01)
Orange/Navy (TT02)

SIZES: S - 6XL

BS6416T

3M Taped Hi Vis X Airflow™ Ripstop Shirt

COLOURS: Orange (BVEO)

SIZES: S - 6XL

RIPSTOP SHIRT

FABRIC

- 100% Cotton Ripstop, 150gsm
- 100% Cotton Mesh, 125gsm

PRODUCT FEATURES

- Women's fit
- 3M 8910P perforated reflective tape hoop pattern around body
- Bisley X Airflow™ technology - upper and lower back, underarm and front cooling ventilation
- Twin Bisley signature chest patch pockets with touch tape closure
- Left pocket with pen division
- Contrast yellow bartack and neck trim
- 2 piece structured collar
- Contoured shape 2 piece sleeve
- Buttoned, adjustable sleeve cuff



BL6415T

Women's 3M Taped Two
Tone Hi Vis X Airflow™
Ripstop Shirt

COLOURS: Yellow/Navy (TT01)
Orange/Navy (TT02)

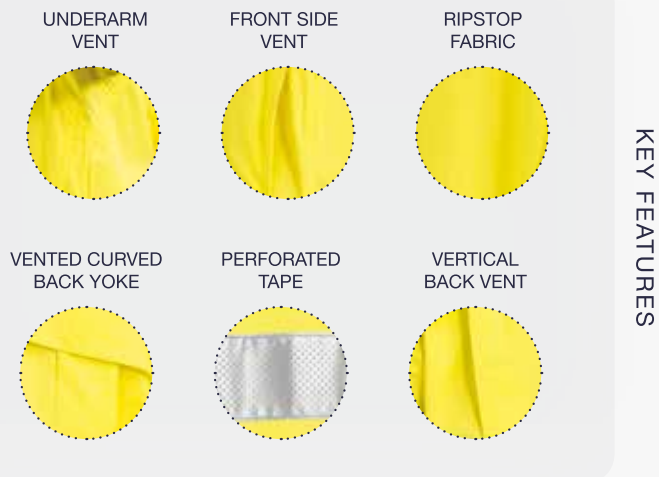
SIZES: 8 - 24

BL6416T

Women's 3M Taped
Hi Vis X Airflow™
Ripstop Shirt

COLOURS: Orange (BVEO)

SIZES: 8 - 24





RIPSTOP WORK PANT

FABRIC

- 100% Cotton Ripstop, 234gsm
- 100% Cotton Mesh, 125gsm

PRODUCT FEATURES

- Modern fit with crotch gusset
- Shaped waistband for better fit and to prevent gaping at back
- Front easy access slant pockets
- LHS front multipurpose pocket and flap
- Twin back hip patch pockets with reinforce self fabric patch
- Back RHS leg ruler pocket with mobile phone pocket, pen and knife division
- All stress points reinforced with heavy duty bartacks
- 7 reinforced wider and stronger belt loops
- Back yoke and crotch gusset ventilation
- Contrast yellow internal trims

ADDITIONAL FEATURES

BP6474

- Front double layered knee patches with touch tape openings to insert padding (padding not included)



BP6474

X Airflow™ Ripstop Vented Work Pant

COLOURS: Navy (BPCT)
Charcoal (BCCG)
Black (BBLK)

SIZES: 77 - 112R
87 - 132S

BSH1474

X Airflow™ Ripstop Vented Work Short

COLOURS: Navy (BPCT)
Charcoal (BCCG)
Black (BBLK)

SIZES: 77 - 132

7 REINFORCED
BELT LOOPS

DOUBLE LAYERED
CONTOURED KNEE PANTS

CURVED
WAISTBAND

KEY FEATURES



RIPSTOP WORK PANTS

FABRIC

- 100% Cotton Ripstop, 234gsm
- 100% Cotton Mesh, 125gsm

PRODUCT FEATURES

- Modern fit with crotch gusset
- 3M 8910P perforated reflective tape hoop pattern around leg
- Front double layered knee patches with touch tape openings to insert padding (padding not included)
- Shaped waistband for better fit and to prevent gaping at back
- Front easy access slant pockets
- LHS front multipurpose pocket and flap
- Twin back hip patch pockets with reinforce self fabric patch
- Back RHS leg ruler pocket with mobile phone pocket, pen and knife division
- All stress points reinforced with heavy duty bartacks
- 7 reinforced wider and stronger belt loops
- Bisley signature key hanger loop on front LHS leg
- Contrast yellow internal trims
- Back yoke and crotch gusset ventilation

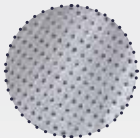


BP6474T
3M Taped X Airflow™
Ripstop Vented Work Pant
COLOURS: Navy (BPCT)
SIZES: 77-112R
87-132S



BPL6474T
Women's 3M Taped X Airflow™
Ripstop Work Pant
COLOURS: Navy (BPCT)
SIZES: 6 – 24

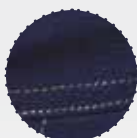
3M PERFORATED
TAPE



7 REINFORCED
BELT LOOPS



CURVED
WAISTBAND



DOUBLE LAYERED
CONTOURED KNEE PANTS



KEY
FEATURES

RIPSTOP CARGO PANTS

FABRIC

- 100% Cotton Ripstop, 234gsm

PRODUCT FEATURES

- Modern engineered fit with contrast stitching
- Shaped waistband for better fit and to prevent gaping at back
- Front easy access slant pockets
- RHS leg ruler pocket with mobile phone, card and pen division
- LHS leg gusset cargo pocket
- Back RHS leg ruler pocket with mobile phone pocket, pen and knife division
- Twin back hip patch pockets with reinforce self fabric patch
- 7 reinforced wider and stronger belt loops
- Bisley signature key hanger loop on front LHS leg
- Contrast yellow internal trims
- Double layer knee
- Back knee panel
- Hem boot shaped cuff



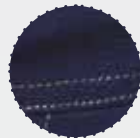
7 REINFORCED
BELT LOOPS



D RING



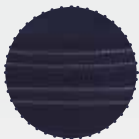
CURVED
WAISTBAND



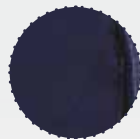
DOUBLE LAYERED
CONTOURED KNEE PANTS



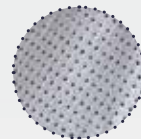
BOOT CUT
HEM



CARGO
POCKETS



3M PERFORATED
TAPE (BPC6475T)



KEY FEATURES

BPC6475

X Airflow™ Ripstop Engineered Cargo Work Pant

COLOURS: Navy (BPCT)
Charcoal (BCCG)
Black (BBLK)

SIZES: 77-112R
87-132S

BPC6475T

3M Taped X Airflow™ Ripstop Engineered Cargo Work Pant

COLOURS: Navy (BPCT)
SIZES: 77-112R
87-132S

Bisley WORKWEAR

HEAD OFFICE AUSTRALIA

3-7 McPherson Street
BANKSMEDOW NSW 2019
Sydney, Australia

T 1300 BISLEY (247 539)

F (02) 9316 4790

E bisley@gazal.com.au

W bisleyworkwear.com.au

WESTERN AUSTRALIA OFFICE

36A Tomah Road
WELSHPOOL WA 6106
Australia

T (08) 6350 7900

F (08) 9258 7828

E bisleywa@gazal.com.au

W bisleyworkwear.com.au

HEAD OFFICE NEW ZEALAND

10 Kitson Place
ST JOHNS, AUCKLAND
New Zealand

T 0800 142 722

F 09 527 4672

E bisley@gazal.com.nz

W www.bisleyworkwear.co.nz

facebook.com/bisleyworkwear

Although we take care during photographic reproduction of our products, colours shown may vary slightly from the actual finished product.
For further information on this or any other offer, please contact Bisley Workwear customer service on 1300 247 539 or your local sales representative. ABN 24 000 058 533.